



# MAISON JADE ROYALE

GLOBAL OS&E + FF&E MANUFACTURING, CURATION, & COLLECTIVE PROCUREMENT ATELIER

**AN EXCLUSIVE COLLECTION OF LUXE  
HIGH SPEED HAIR DRYER & CLOTH STEAMER**

**WHERE CURATION, BESPOKE MANUFACTURING, & COLLECTIVE  
PROCUREMENT RE-CREATE OS&E + FF&E TO  
ENCHANT EVERY GUEST EXPERIENCE**

**OFFICES: ATLANTA | DALTON | INDIANAPOLIS | VANCOUVER**

 1-888-358-0788  [www.maisonjaderoyale.com](http://www.maisonjaderoyale.com)  [info@maisonjaderoyale.com](mailto:info@maisonjaderoyale.com)

Super+ high speed

# HIGH SPEED HAIR DRIER

Digital screen display

high speed motor

constant temperature

Multi level adjustment



## MJR - SERIES 1

### PRODUCT SPECIFICATION

Size: 28\*7.2\*9.5 cm  
Power: 1600W  
Rated Input : 220V-240~50HZ  
Air Speed: 27m/s

Constant temperature detection: 100/s  
Brushless Motor Anion: 110000RPM  
Noise: 65 dB  
Anion: 200,000,000

**Features:** High Speed, Light Weight, Low Noise

[www.maisonjaderoyale.com](http://www.maisonjaderoyale.com)

[info@maisonjaderoyale.com](mailto:info@maisonjaderoyale.com)

888-358-0788

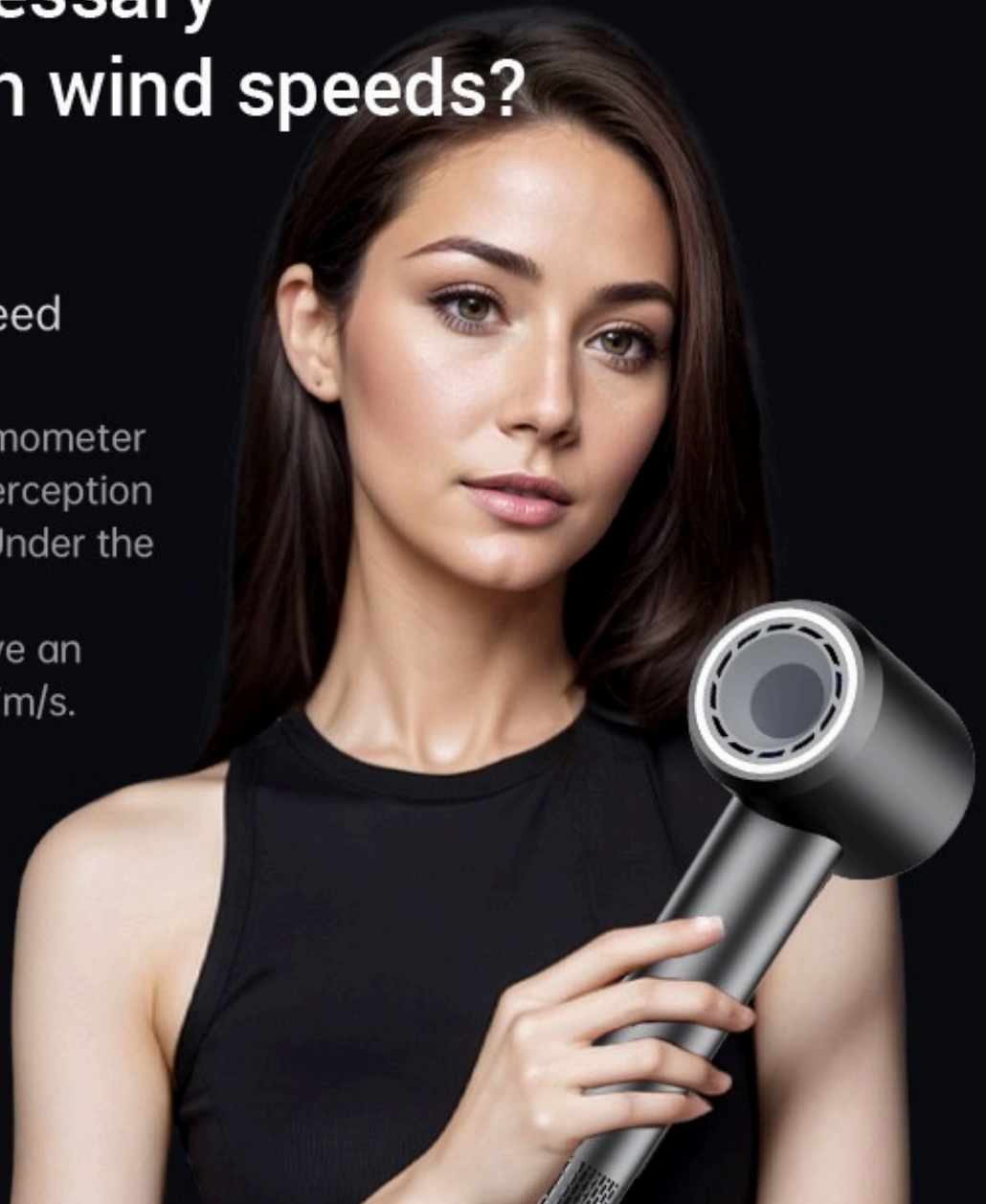


# Why is it necessary Pursuing high wind speeds?

## hurricane

Real sensory wind speed

We use a blade type anemometer that is closer to human perception for speed measurement, Under the same testing conditions, traditional hair dryers have an average speed of about 7m/s.



Super+ high speed

**HIGH SPEED**  
Circular temperature light

Digital screen display

- Temperature control monitoring
- Multi level adjustment
- Light noise reduction

Multi level adjustment  
One click hot and cold cycle

FAN SPEED  
I Small wind; II strong wind

Long press: Cold and hot cycle mode

Temperature regulation

- Cold wind (blue light)  
Temperature: 1 gear 26° C, 2 gear 26° C
- Warm air (orange light)  
Temperature: 1 gear 50° C, 2 gear 68° C
- Hot air (red light)  
Temperature: 1 gear 88° C, 2 gear 82° C

it ' s a piece of cake  
Low decibel noise reduction system

The longer your hair, the more you understand the meaning of "lightness"  
Noise reduction duct, no noise, no noise

# MJR – SERIES 1



# High speed hurricane to avoid baking Make hair smoother

The high-speed motor brings strong wind speed, reaching every strand of hair in milliseconds, Avoid high temperature baking, neutralize static electricity, smooth and fluffy.



**Self developed high-speed motor**  
Hurricane rapidly dries up

Our self-developed high-speed brushless motor generates a doubling of air pressure through high-speed rotation, Bringing strong and smooth airflow.

performance improvement

**High speed motor**

Comparable to the speed of an airplane engine, Equipped with a precision air outlet duct, Forming a surging high-pressure airflow, Can quickly remove moisture from hair tips.

**Dynamic balance**

Laser engraving reduces weight and suppresses blade vibration, Realize smooth operation.

**High density precision**

Five axis CNC precision carving technology

**Smooth operation**

Longer service life



**high speed motor**  
Hurricane drying stylings

**Digital screen display**  
The temperature is clear and accurate

**AI temperature control chip**  
Monitor temperature at all times

**Double overheat protection**  
Make the design safer

**Constant temperature care**  
Radiate heat with natural radiance

**Multi speed and temperature regulation**






## MJR - SERIES 1



High-speed hair care hair dryer

HIGH-SPEED QUICK DRYING

CONSTANT TEMPERATURE HAIR CARE

ALTERNATE CYCLE OF HOT AND COLD



110,000 HIGH-SPEED MOTOR

**PRODUCT SPECIFICATION**

Size: 28\*7.2\*9.5 cm  
Power: 1600W  
Rated Input : 220V-240~50HZ  
Air Speed: 27m/s

Constant temperature detection: 100/s  
Brushless Motor Anion: 110000RPM  
Noise: 65 dB  
Anion: 200,000,000  
**Features:** High Speed, Light Weight, Low Noise

MJR - SERIES 2



# HIGH SPEED HAIR DRYER

IT IS OUTSTANDING.

NO NEED TO KEEP A LOW PROFILE.

AFTER MANY DEBUGGING,

THE COLOR SYSTEM IS MORE DURABLE.



**MOISTURIZING CARE**  
**SOFT AND SHINY BLEW OUT**

NOURISHING HAIR PRESENTS A SOFT AND NATURAL STATE, SHINY.



**HIGH-POWER QUICK-DRYING**  
**I WON'T WAIT FOR THE DRY HAIR.**

HIGH-SPEED MOTOR, WITH HIGH POWER TO ACHIEVE FAST DRYING.

## MJR - SERIES 2



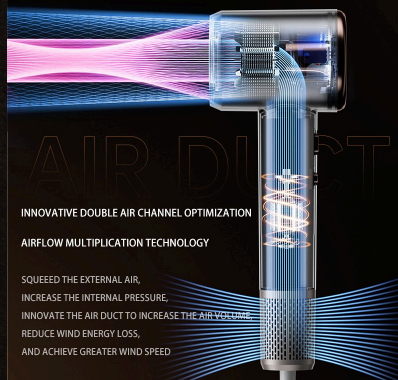
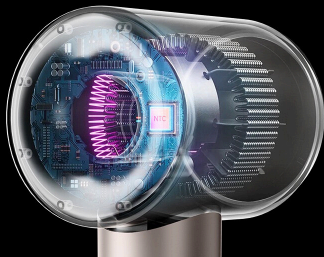
# BE CLEAR AT A GLANCE MAKE THE TEMPERATURE VISIBLE.

THREE-COLOR INDICATOR LIGHT, WIND TEMPERATURE MODE IS CLEAR AT A GLANCE



## NTC INTELLIGENT TEMPERATURE CONTROL REDUCE HAIR DAMAGE

INTELLIGENT NTC DETECTION AND TEMPERATURE CONTROL TECHNOLOGY, KEEP THE TEMPERATURE CONSTANT.



## HIGH-SPEED MOTOR PROVIDE ABUNDANT WIND

TAKE ADVANTAGE OF STRONG WINDS  
TAKE AWAY THE MOISTURE FROM THE HAIR SURFACE.

110,000 Turn/min STRONG WIND Quick-drying

# MJR - SERIES 2

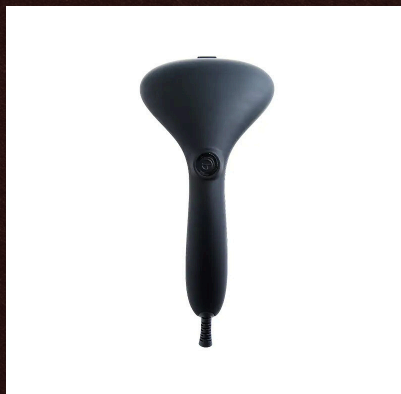
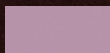




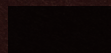
## ROYALE HOTEL CLOTH STEAMER



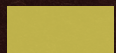
PINK



BLACK



YELLOW

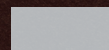


**STEAM.SMOOTH.SERVE IN STYLE.**

**Because every crease-free detail reflects the standard of  
Maison Jade Royale.**



**SKY BLUE**



**PRODUCT SPECIFICATION:**

Power: AC220-240V, 50/60Hz, 1500W

Capacity: 85ml

Heating time: 25-30seconds

Steam temperature: 100±5°C

N.W/G.W: 12/13kgs

MJR Series A: Nylon plate

MJR Series B: Stainless steel plate

**PACKAGING**

Color box size:  
345x115x210mm

**Difference between A and B**



**Accessories**



**Royale Hotel Cloth Steamer** - ensuring every garment, uniform, and guest arrival is impeccably presented.  
Because in hospitality, perfection isn't optional - it's expected.



# MAISON JADE ROYALE

GLOBAL OS&E + FF&E MANUFACTURING, CURATION, & COLLECTIVE PROCUREMENT ATELIER

WHERE CURATION, BESPOKE MANUFACTURING, & COLLECTIVE  
PROCUREMENT RE-CREATE OS&E + FF&E TO  
ENCHANT EVERY GUEST EXPERIENCE

OFFICES: ATLANTA | DALTON | INDIANAPOLIS | VANCOUVER

 1-888-358-0788  [www.maisonjaderoyale.com](http://www.maisonjaderoyale.com)  [info@maisonjaderoyale.com](mailto:info@maisonjaderoyale.com)